



## The Bank, 58 Sheepcote Street

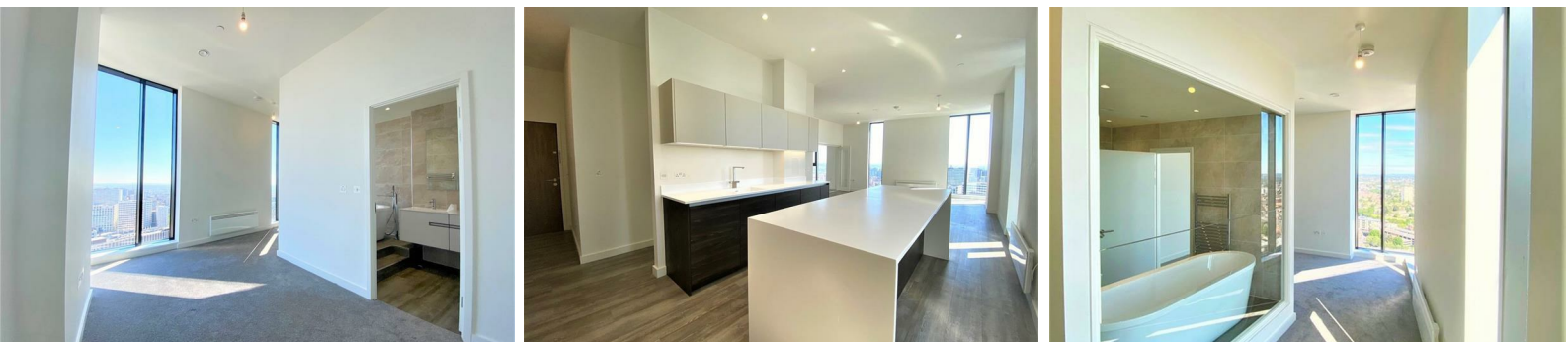
£2,850 PCM

\*\*Video/Virtual Tour Available\*\*

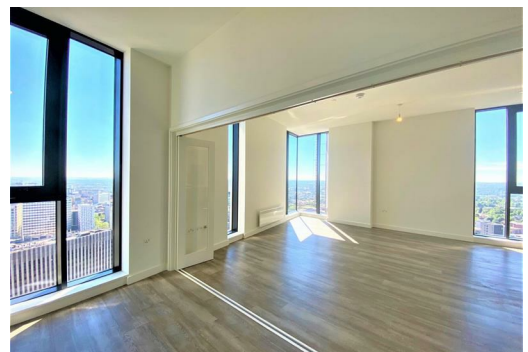
BRAND NEW CONVERSION OF TWO APARTMENTS INTO ONE LUXURY SUITE

Located In the heart of Birmingham within The Bank Tower 2 complex on the 31st floor, this completely unique and stylish apartment offers outstanding views across the vibrant city, while providing direct access to all of Birmingham's amenities. With luxurious finishes, an extremely spacious layout and breath-taking views, this apartment is Birmingham's most desirable place to live. The sheer size of this apartment is unrivalled in this locality, having originally been two separate apartments, this conversion offers a huge amount of open plan living space, something you need to view to fully appreciate.

The property comes unfurnished allowing you to put your own stamp on this luxurious space. With two double bedrooms, each featuring an en-suite bathroom, with the master suite being a particular feature to this apartment with a glass wall allowing you to soak in the elevated bath tub whilst enjoying views across the city landscape, his and hers sinks, and a separate shower enclosure. There is also a small dressing room providing the extra storage space. The living room having large floor to ceiling windows, a striking corner window both showcasing cracking views out over the city. The contemporary open plan kitchen has plenty of space for all your get-togethers, with integrated washing machine, dishwasher, fridge freezer and the added bonus of a wine fridge. There is also a guest WC off the hallway.



207, The Bank 58 Sheepcote Street, Birmingham, B16 8WN



Energy Efficiency Rating		Environmental Impact (CO <sub>2</sub> ) Rating	
Very energy efficient - lower running costs	Worse	Very environmentally friendly - lower CO <sub>2</sub> emissions	Worse
92-100 A		10-15 A	
81-91 B		16-20 B	
69-80 C		21-25 C	
55-68 D		26-30 D	
44-54 E		31-35 E	
35-43 F		36-40 F	
2-34 G		41-45 G	
Very energy inefficient - higher running costs		Very environmentally unfriendly - higher CO <sub>2</sub> emissions	